




Hallstatt Textil 123

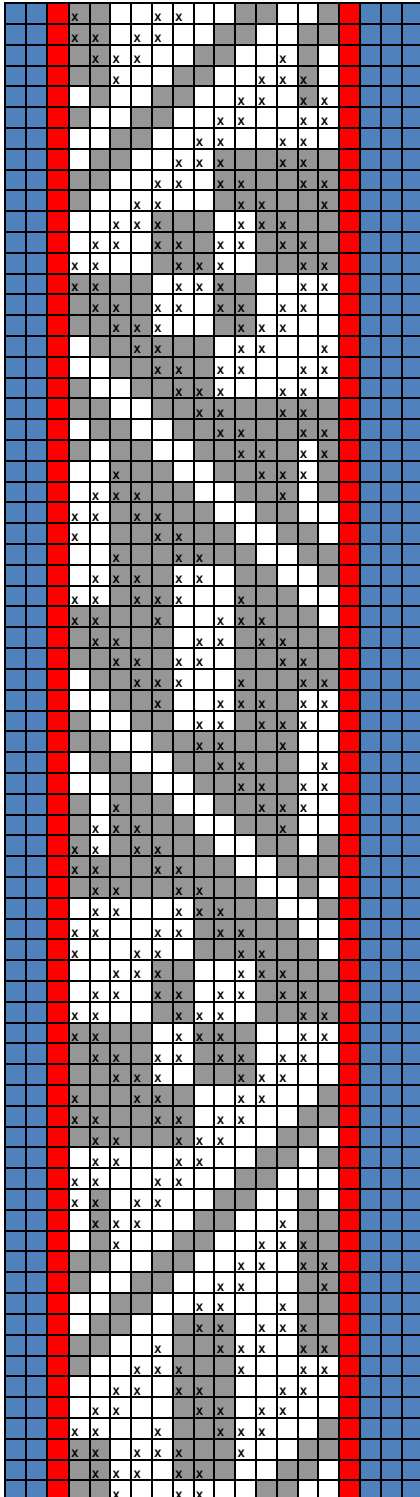
| A | B | C | 1 | 2 | 3 | 4 | 5 | 6 | 7 | 8 | 9 | 10 | 11 | 12 | 13 | D | E | F | G |
|---|---|---|---|---|---|---|---|---|---|---|---|----|----|----|----|---|---|---|---|
| S | S | S | Z | Z | Z | Z | Z | Z | Z | Z | Z | Z | Z | Z | Z | S | S | S | S |
| A | | | | | | | | | | | | | | | | | | | |
| B | | | | | | | | | | | | | | | | | | | |
| C | | | | | | | | | | | | | | | | | | | |
| D | | | | | | | | | | | | | | | | | | | |

| | | |
|--------|---|---|
| Weber | A | D |
| Weaver | B | C |

Musterentwicklung: Silvia Aisling Ungerechts

S/Z = Fadenstellung /Threads

-  = Brettchen werden vom Weber weg gedreht / turn the tablets away
-  = Brettchen werden zum Weber hin gedreht / turn the tablets toward you
-  = So soll das Muster aussehen / this will be the pattern



Diese Anleitung
ist nur für den
privaten Gebrauch
gedacht.
This pattern is only
for private use.
No commercial use allowed